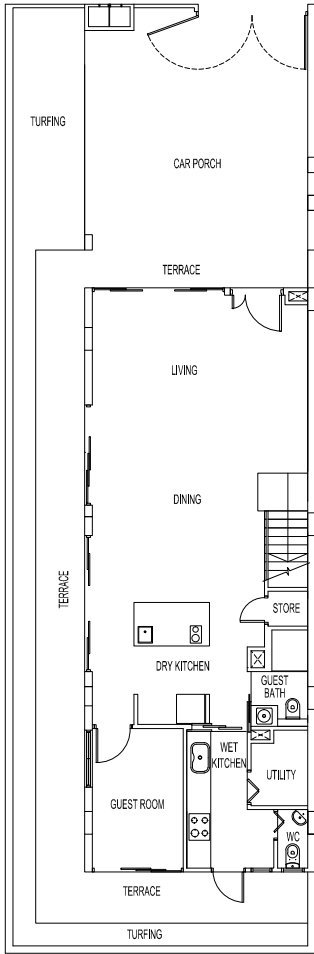


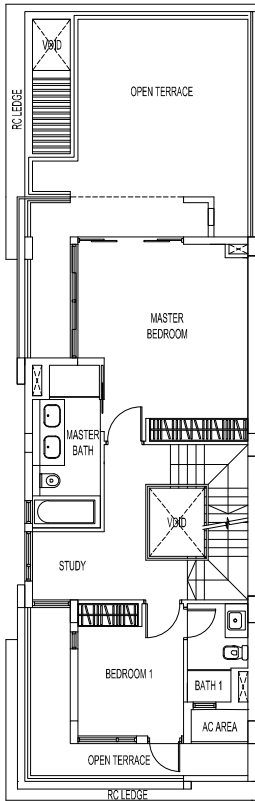
Type D1a
(with water tank)

Land Area: 200 sq m / 2,153 sq ft
Estimated Floor Area: 355 sq m / 3,821 sq ft

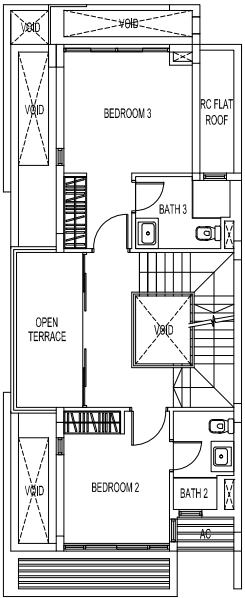
(inclusive of covered terrace, covered car porch, terrace, a/c ledge, open roof terrace, open terrace, skylight and water tank / pump)



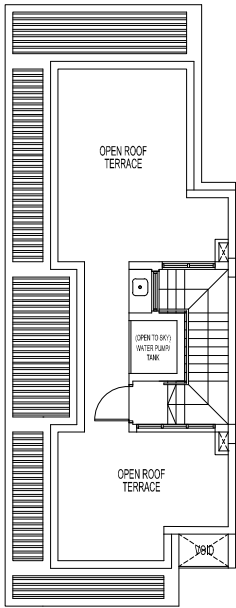
Ist Storey



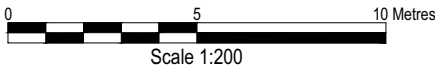
2nd Storey



3rd Storey



Roof Terrace

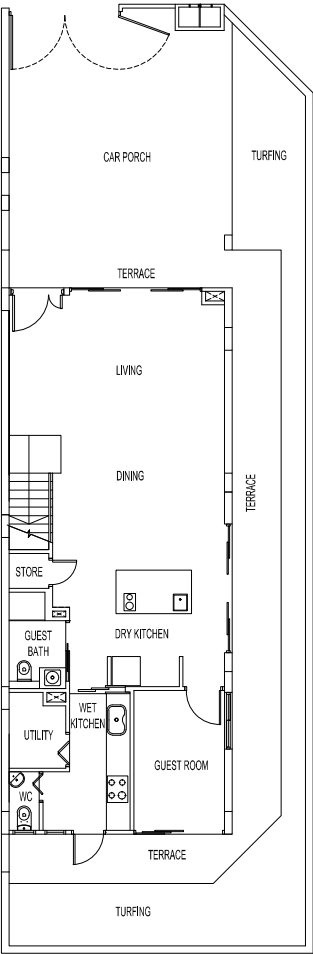


Plans are subject to change as may be required or approved by the relevant authorities. Areas are estimates only and are subject to final survey. Building Plan Approval: A0506-0047-2010-BP01 dated 24 November 2011, A0506-00047-2010-BP02 dated 18 September 2012 and A0506-00047-2010-BP03 dated 9 February 2015

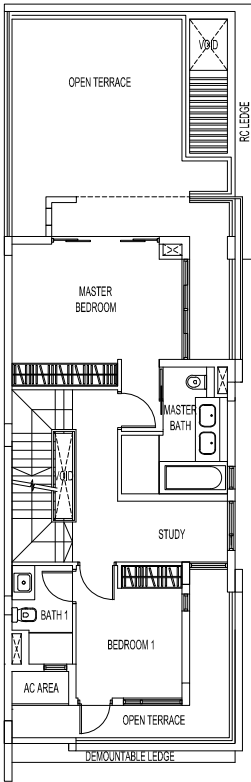
Type D1b
(without water tank)

Land Area: 200.7 sq m / 2,160 sq ft
Estimated Floor Area: 334 sq m / 3,595 sq ft

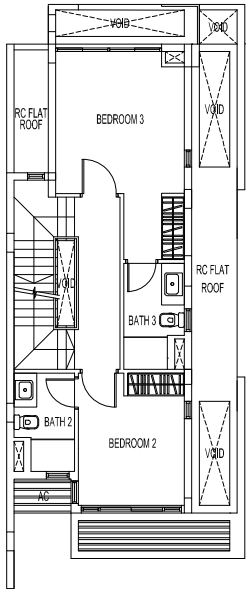
(inclusive of covered terrace, covered car porch, terrace, a/c ledge, open roof terrace, open terrace and skylight)



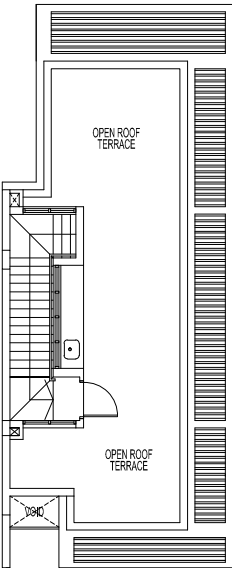
Ist Storey



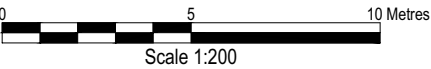
2nd Storey



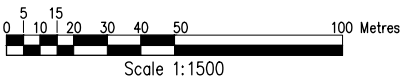
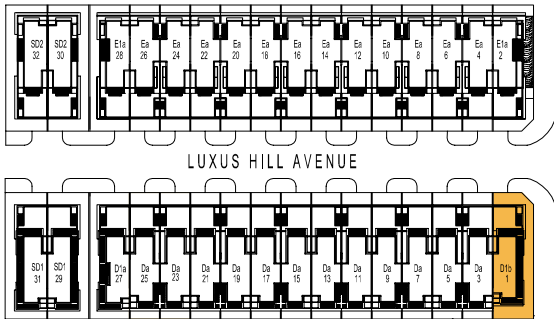
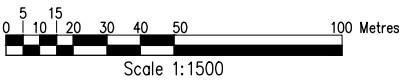
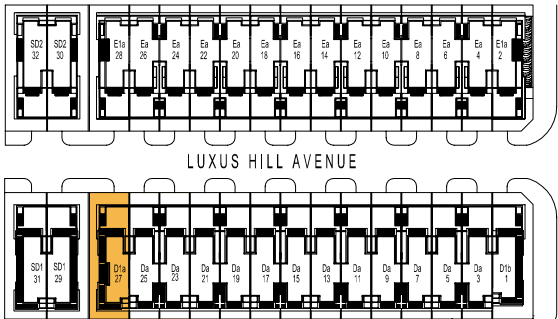
3rd Storey



Roof Terrace



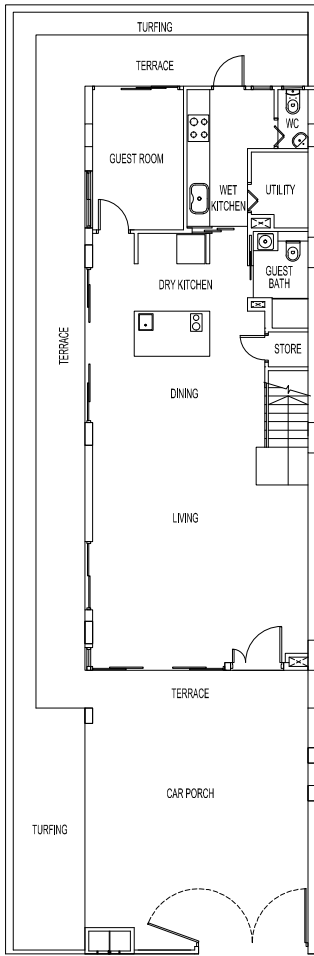
Plans are subject to change as may be required or approved by the relevant authorities. Areas are estimates only and are subject to final survey. Building Plan Approval: A0506-0047-2010-BP01 dated 24 November 2011, A0506-00047-2010-BP02 dated 18 September 2012 and A0506-00047-2010-BP03 dated 9 February 2015



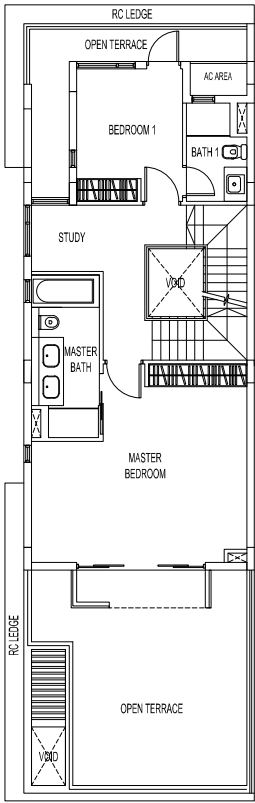
Type 1a
(with water tank)

Land Area: 200 sq m / 2,153 sq ft
Estimated Floor Area: 356 sq m / 3,832 sq ft

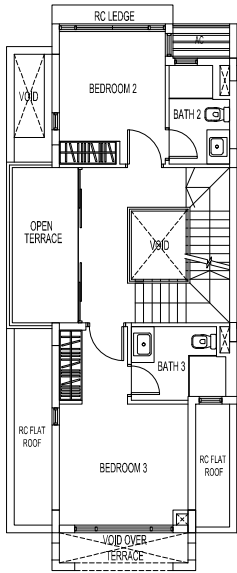
(inclusive of covered terrace, covered car porch, terrace, a/c ledge, open roof terrace, open terrace, skylight and water tank / pump)



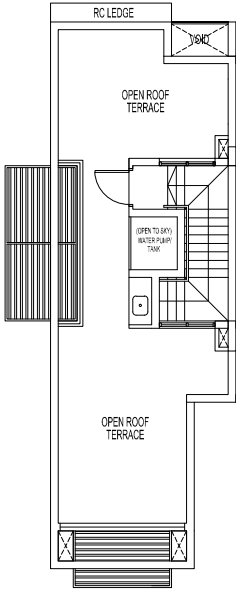
1st Storey



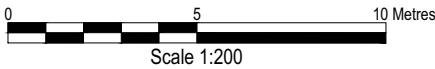
2nd Storey



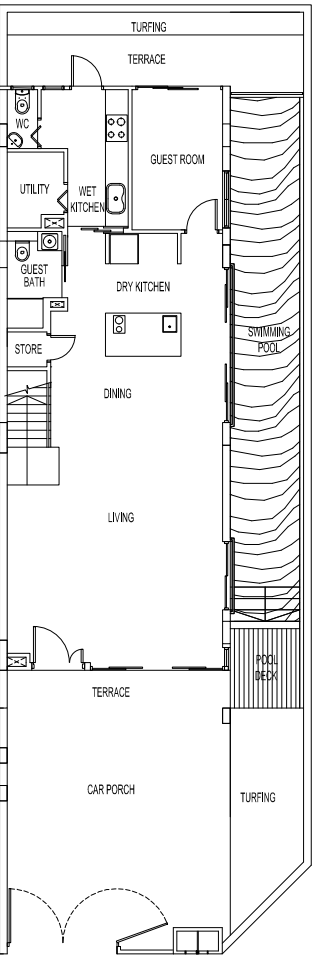
3rd Storey



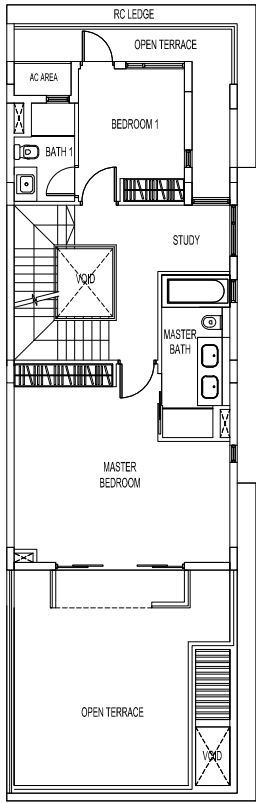
Roof Terrace



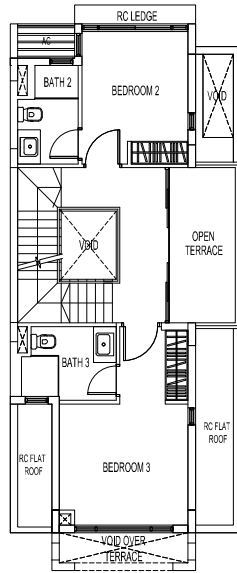
Plans are subject to change as may be required or approved by the relevant authorities. Areas are estimates only and are subject to final survey. Building Plan Approval: A0506-0047-2010-BP01 dated 24 November 2011, A0506-00047-2010-BP02 dated 18 September 2012 and A0506-00047-2010-BP03 dated 9 February 2015



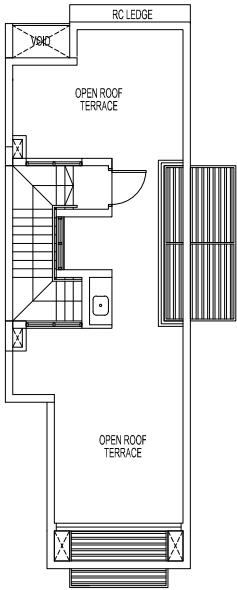
1st Storey



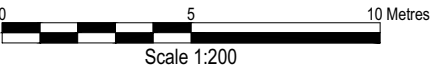
2nd Storey



3rd Storey



Roof Terrace

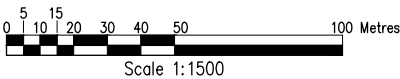
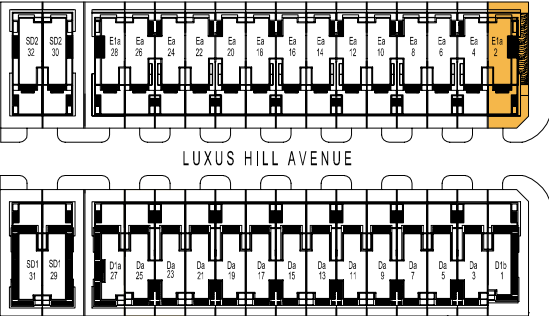


Plans are subject to change as may be required or approved by the relevant authorities. Areas are estimates only and are subject to final survey. Building Plan Approval: A0506-0047-2010-BP01 dated 24 November 2011, A0506-00047-2010-BP02 dated 18 September 2012 and A0506-00047-2010-BP03 dated 9 February 2015

Type 1a
(without water tank)

Land Area: 200.7 sq m / 2,160 sq ft
Estimated Floor Area: 356 sq m / 3,832 sq ft

(inclusive of covered terrace, covered car porch, terrace, a/c ledge, open roof terrace, open terrace and skylight)



Plans are subject to change as may be required or approved by the relevant authorities. Areas are estimates only and are subject to final survey. Building Plan Approval: A0506-0047-2010-BP01 dated 24 November 2011, A0506-00047-2010-BP02 dated 18 September 2012 and A0506-00047-2010-BP03 dated 9 February 2015