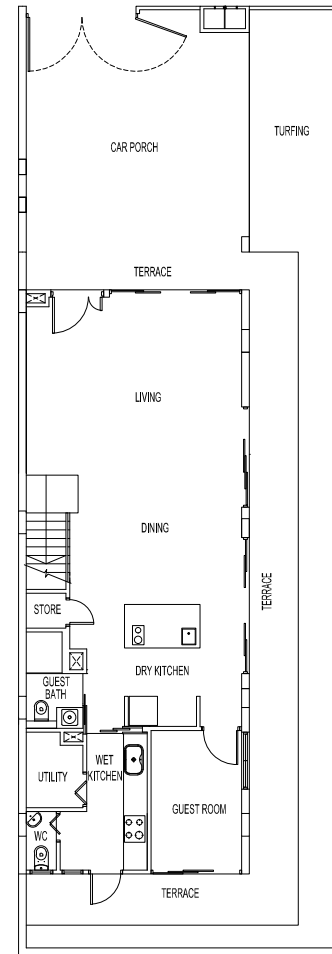


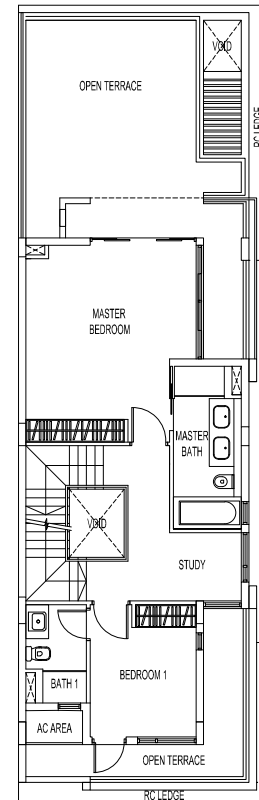
## Type SDI (with water tank)

Land Area: 208.8 sq m / 2,248 sq ft  
Estimated Floor Area: 358 sq m / 3,854 sq ft

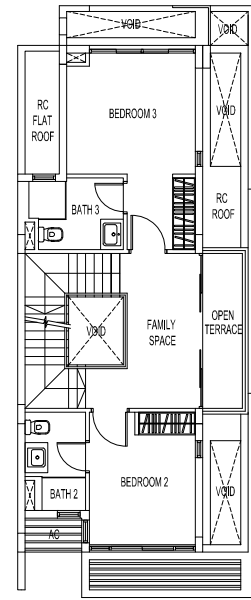
(inclusive of covered terrace, covered car porch, terrace, a/c ledge, open roof terrace, open terrace, skylight and water tank / pump)



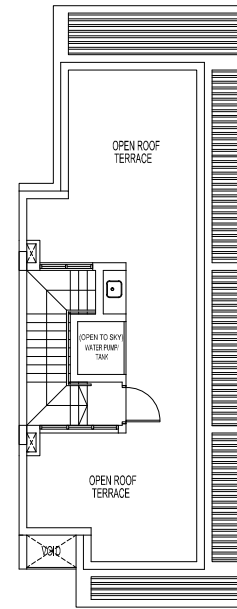
1st Storey



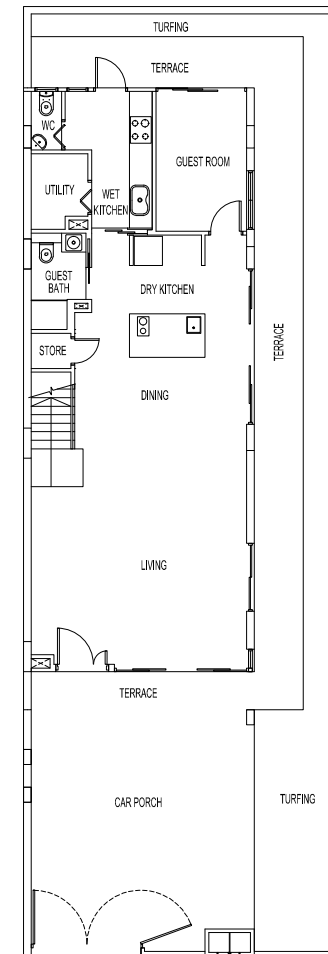
2nd Storey



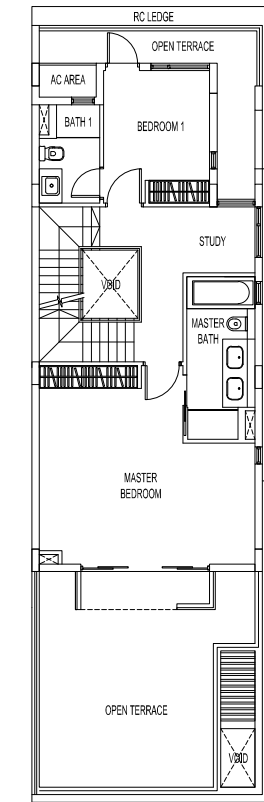
3rd Storey



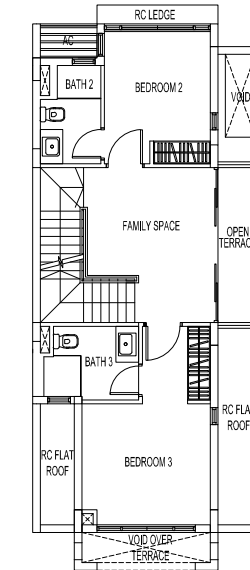
Roof Terrace



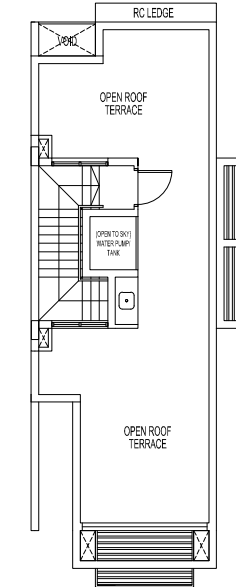
1st Storey



2nd Storey



3rd Storey

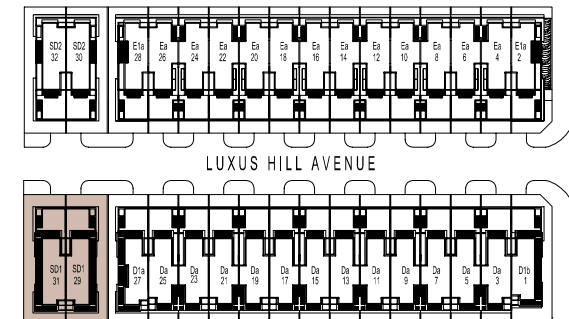


Roof Terrace

## Type SD2 (with water tank)

Land Area: 207.5 sq m / 2,234 sq ft  
Estimated Floor Area: 360 sq m / 3,875 sq ft

(inclusive of covered terrace, covered car porch, terrace, a/c ledge, open roof terrace, open terrace, skylight and water tank / pump)

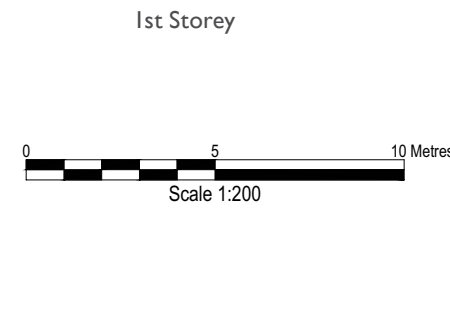


Scale 1:1500



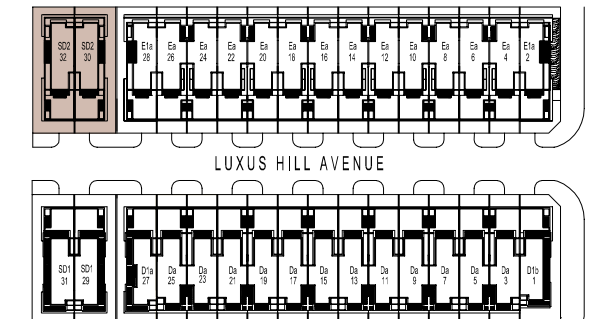
Plans are subject to change as may be required or approved by the relevant authorities. Areas are estimates only and are subject to final survey. Building Plan Approval: A0506-0047-2010-BP01 dated 24 November 2011, A0506-00047-2010-BP02 dated 18 September 2012 and A0506-00047-2010-BP03 dated 9 February 2015

Scale 1:200



Scale 1:200

Plans are subject to change as may be required or approved by the relevant authorities. Areas are estimates only and are subject to final survey. Building Plan Approval: A0506-0047-2010-BP01 dated 24 November 2011, A0506-00047-2010-BP02 dated 18 September 2012 and A0506-00047-2010-BP03 dated 9 February 2015



Scale 1:1500

